

# ANALÓG JELKÁBEL BEKÖTÉSEK

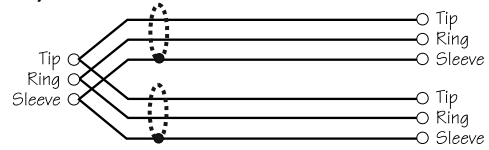
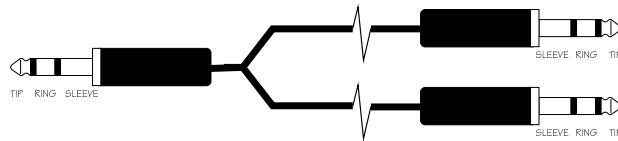
Szimmetrikus/aszimmetrikus "Y" elágazó



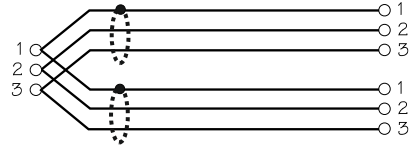
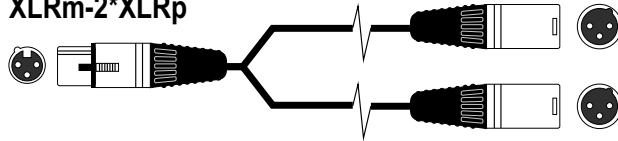
Az egyes készülékek bekötése ettől eltérhet. Pontos információt a Kezelési útmutató adhat!

## "Y" elágazó szimmetrikus ("Y" Leads balanced)

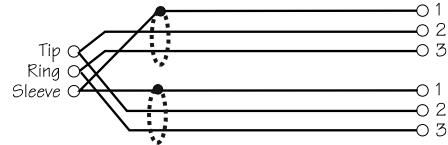
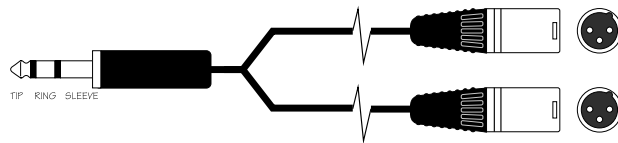
### TRS-2\*TRS (6,3 SZTEREÓ JACK-2\* 6,3 SZTEREÓ JACK)



### XLRm-2\*XLRp

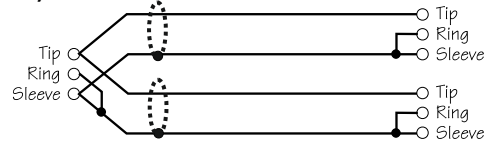
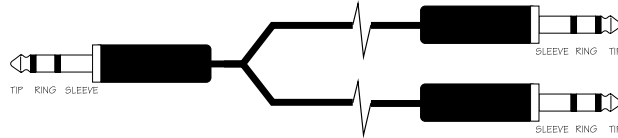


### TRS-2\*XLRp (6,3 SZTEREÓ JACK-2\*XLRp)

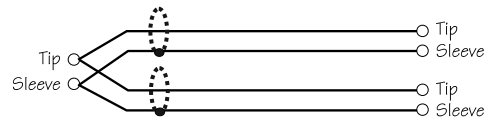
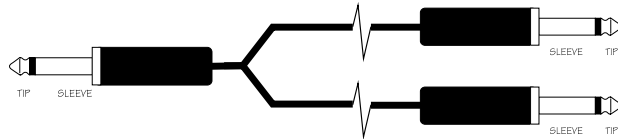


## "Y" elágazó aszimmetrikus ("Y" Leads unbalanced)

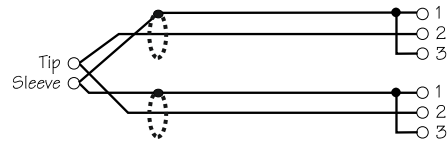
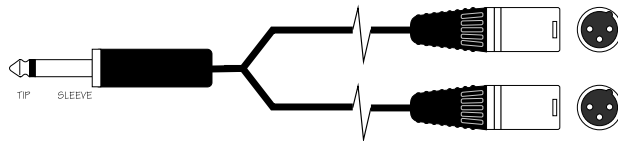
### TRS-2\*TRS (6,3 SZTEREÓ JACK-2\* 6,3 SZTEREÓ JACK)



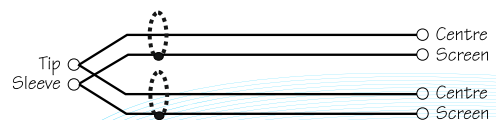
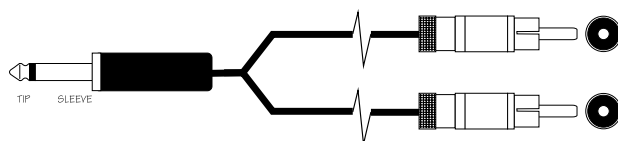
### TS-2\*TS (6,3 MONO JACK-2\* 6,3 MONO JACK)



### TS-2\*XLRp (6,3 MONO JACK-2\*XLRp)



### TS-2\*RCA (6,3 MONO JACK-2\*RCA)



Nézd meg a többi hangtechnikai anyagunkat a [hangiskola.hu](http://hangiskola.hu) oldalon!